

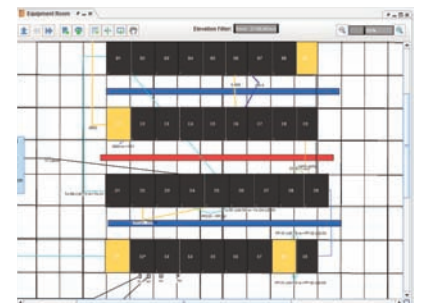
# PRODUCT INFORMATION

## PATCH MANAGER IIM SOFTWARE



### OVERVIEW

PATCH MANAGER gives you all the tools you need to manage your physical network layer in a simple, efficiently and cost effective way. By providing a full, transparent, up-to-date model of the physical Layer, PATCH MANAGER makes it easy to visualize and analyze your complete end-to-end cabling infrastructure, IT assets and racks. With less time spent tracking connections and less room for errors, the result is less downtime and reduced maintenance costs. PATCH MANAGER gives clear insight into the purpose and usage of every cable by presenting network locations and equipment in intuitively navigable hierarchical graphical views. With realistic modeling that maps one-to-one with actual infrastructure, PATCH MANAGER provides network professionals with a simple to use but powerful application. PATCH MANAGER is the only truly adaptable solution for documenting and administering the physical layer of your network. It is a universally applicable solution with template-based modeling of network locations and components that enables application to a wide variety of networks. Easily configurable and fully customizable to every user's requirements, it is a future-proof investment that adapts to your current and evolving infrastructure.



Representation illustration of several racks and its connections in a datacenter from above bird's eye view.



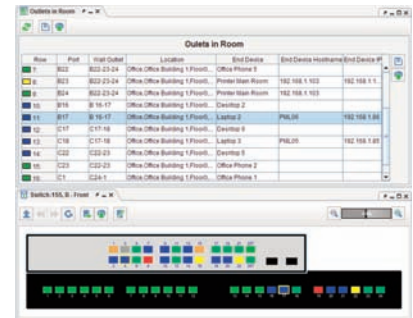
PATCH MANAGER enables a clear illustration of all network paths.

# PRODUCT INFORMATION

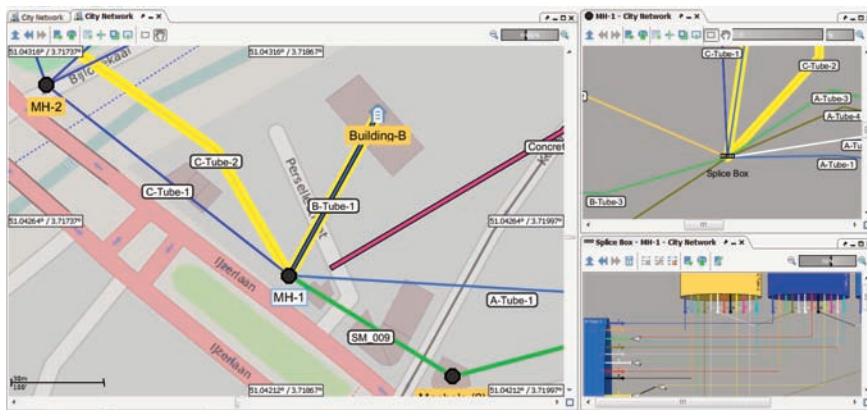
## PATCH MANAGER IIM SOFTWARE

### KEY FEATURES

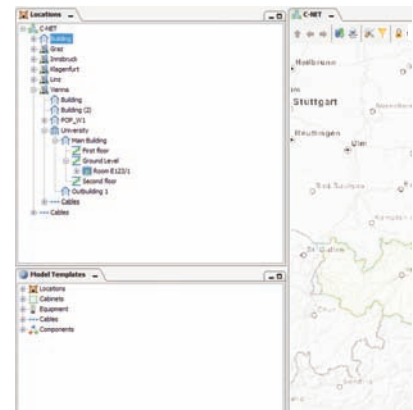
- Easy modeling of complete network infrastructures.
- Management of copper, fiber, WAN, LAN and power infrastructure.
- Optimization of 'Moves', 'Adds' and 'Changes' in the physical layer.
- Creation of realistic rack and equipment visualizations.
- Optimization of use of available network capacity.
- Planning rack space and power consumption.
- Assessing the impact of loss of connectivity of power and network connections.
- Data mining assets and connectivity.
- Improving network communication paths.



Overview of wall outlets and switch ports.



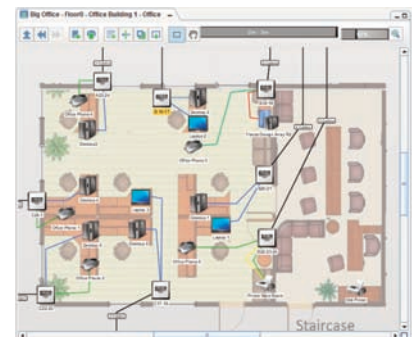
GIS extension with indication of splice cabinets and splice plan.



Hierarchical overview of network locations.

### THE ADVANTAGE OF PATCH MANAGER

PATCH MANAGER is a future-proof investment that scales to support many roles such as network administrators, network engineers, help-desk support, asset and floor managers. Its useful features and intuitive operation improves and simplifies network management, resulting in fewer errors and less downtime. PATCH MANAGER is architected on popular, open IT standards allowing optional integration with external systems such as switch and telephony management systems.



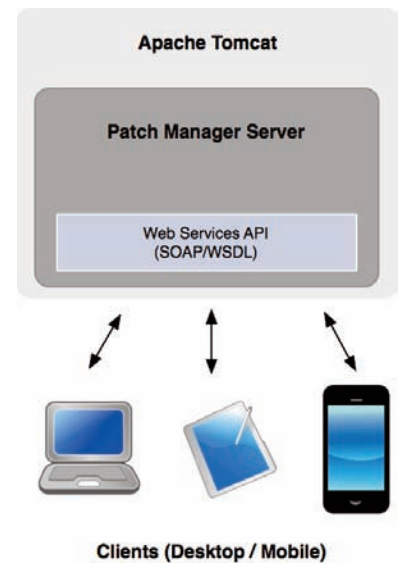
Office room with network equipment.

# PRODUCT INFORMATION

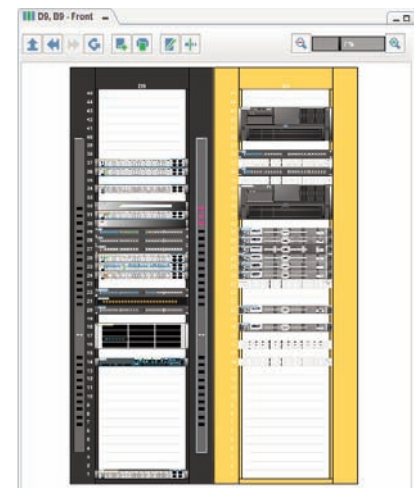
## PATCH MANAGER IIM SOFTWARE

### 8 REASONS FOR CHOOSING PATCH MANAGER

- PATCH MANAGER's robust, server based architecture scales seamlessly with your enterprise growth offering continued reliable, 24/7 operation, whilst requiring minimal maintenance.
- In addition to the Java based client, PATCH MANAGER offers a full web application as well as a smart-phone client. The server automatically synchronizes data with client processes, ensuring the latest data is always at the fingertips of both mobile and desktop users.
- PATCH MANAGER incorporates a fully customizable fine grained policy based user management that gives the detailed control of who is allowed to do what, ensuring that user activities stay in line with their assigned job role.
- PATCH MANAGER provides fully customized access and presentation of network data, ensuring that a variety of users can generate reports relevant to their requirements.
- PATCH MANAGER includes support for the whole network infrastructure lifecycle including design, installation, operation and decommissioning. This support assists proper planning and execution of each stage and is a useful, time-saving feature in many work processes.
- PATCH MANAGER is simple to install and setup. With easy migration from existing legacy data sources, you will be up and running in no time at all when switching to PATCH MANAGER.
- PATCH MANAGER is also available as a Software-as-a-Service (SaaS) solution. You rent the software, we provide and maintain the required infrastructure.
- PATCH MANAGER is Java based and therefore platform-independent. Thus it can be run on Windows as well as Linux based operating systems. As database management system (DBMS), both commercial as well as open-source products are supported.



Software architecture of PATCH MANAGER.



Pre-defined templates allow a realistic modeling of the whole network equipment.

# PRODUCT INFORMATION

## PATCH MANAGER IIM SOFTWARE

### INTERFACES FOR PATCH MANAGER

PATCH MANAGER offers a powerful API, that enables access through SOAP/WSDL based web-services. Thus PATCH MANAGER can be integrated easily into existing software infrastructures. All data objects and their appropriate attributes can be read, created or modified. In addition to the API, there are the following standard interfaces available:

- **PATCH MANAGER Switch Data Synchronization Bridge**  
Enables the integration of real time switching data into PATCH MANAGER.
- **PATCH MANAGER Data Integration Bridge**  
Enables data integration of additional external data sources (e.g. ERP systems, active components, etc.) with PATCH MANAGER. It supports various protocols such as SNMP, CSV, ODBC database access and web services.
- **PATCH MANAGER Reporting Bridge**  
The PATCH MANAGER Reporting Bridge features predefined analysis capabilities (e.g. network capacity overview, equipment status reporting, etc.). Typical reporting scenarios are port availability of a switch or patch panel, fiber utilization in multicore fiber optical cables, power consumption and cooling requirement planning, asset reporting.
- **euroclust Patch Assist Bridge**  
Patch Assist is an automatic port detection and network management hardware interface, based on RFID technology.



euroclust Patch Assist patch field.